

MAINS	2 x KMT DF 1022 top / 2x10"/1x2"
	2 x KMT SW1520 sub / 2x15"
	2 x KMT CA-16 amplifier driving subs
	1 x Crown XLi 2500 amplifier driving tops
	1 x Xilica XP-4080 drive rack for mains
REAR SPEAKERS	2 x KMT CS 215 coaxial speaker system for party
	1 x Crown XTI 2002 DSP-amplifier
MIXER	1 x DIGICO SD-9 digital audio mixer (incl. Stealth Core 2 Upgrade)
	1 x DIGICO D-Rack / 32ch. Input / 8ch. output
MONITORING	5 x KMT CM 12 monitorwedge 12"/1" coaxial
	1 x RCF ART 312 A MKII used as drumfill
	3 x Crown XTI 2002 DSP-amplifier
MICROPHONES & STUFF	1 x AKG D112
	1 x Audix D6
	1 x Audix OM7
	1 x Beyer Dynamic CK703 (SDC)
	2 x MB Haun MBC 660 (SDC)
	2 x Oktava MK-012 (SDC)
	2 x Sennheiser e904
	2 x Sennheiser e604
	2 x Sennheiser e606
	1 x Shure Beta 91A
	3 x Shure SM57
	5 x Shure SM58
	10 x Large booms
	2 x Medium booms
	3 x Small booms
1 x Straight, round base	

DI BOXES

6 x Palmer PAN-01 (passive)

4 x Palmer PAN-02 (active)

DJ - STUFF

3 x Technics 1210 MK2 Vinyl Player

2 x Pioneer CDJ 350 CD Player, incl. USB

1 x Pioneer DJM 900-Nexus Mixer, incl. USB

I/O-PATCH FOR SD-9-SHOWFILES

Feel free to bring your own session file. Stereo out is connected via local outs 7&8 on the desk. Talkback is connected to local In 1, stereo-mini-jack to local ins 7&8. Monitor sends should be routed to Rack 1, Line Out 1-8, outputs 1 to 6.

The desk runs the firmware v760, but not Stealth Core 2.

MONITOR DESKS

Monitor desks are only to be set up either in the upstage right corner or in the stage left access area. The emergency exits and their surrounding areas have to be kept clear at all times.

For further details please check the green marked areas on the floor plan on page 7.

RECORDING

We offer a high quality multitrack recording service of your show at an affordable rate. If you are interested in having your show multitracked, please get in touch with Juanfe via +49(0)15221986293 to discuss the details.

LIGHTS

1 x MA Lighting 2Port Node 1k

1 x Control Package: HP Prodesk 400 G3, Elation Midicon Pro, Dell S2240T **Running gMA OnPC 3.3.4.1**

1 x BOTEK DD-4 DMX Booster/Splitter 4-way, pinout: 3&5

8 x GLP Volkslicht RBG

1 x GLP Volkslicht RGB ZOOM

4 x Stairville Pixel Beam 160 RGBW

8 x Stairville MH-X25 25W LED moving light

2 x Stairville Matrix Blinder 5x5

2 x Ignition Romeo 650/1000 Fresnel/PC (1x Botex UP-2 - 1 Channel Dimmer 10 A)

3 x Cameo QSpot

3 x Stairville WildWash 132 RGB

3 x LED Par 56, RGB

1 x Smoke Factory TourHazer II

1 x Mirror Ball 50cm with Motor

PROJECTION *

1 x Projector NEC M300W / 3000 ANSI-Lumen/ WXGA Resolution 16:10

1 x screen / approx. 5m x 3m

Video feed via HDMI from stage or HDMI / VGA from front of house.

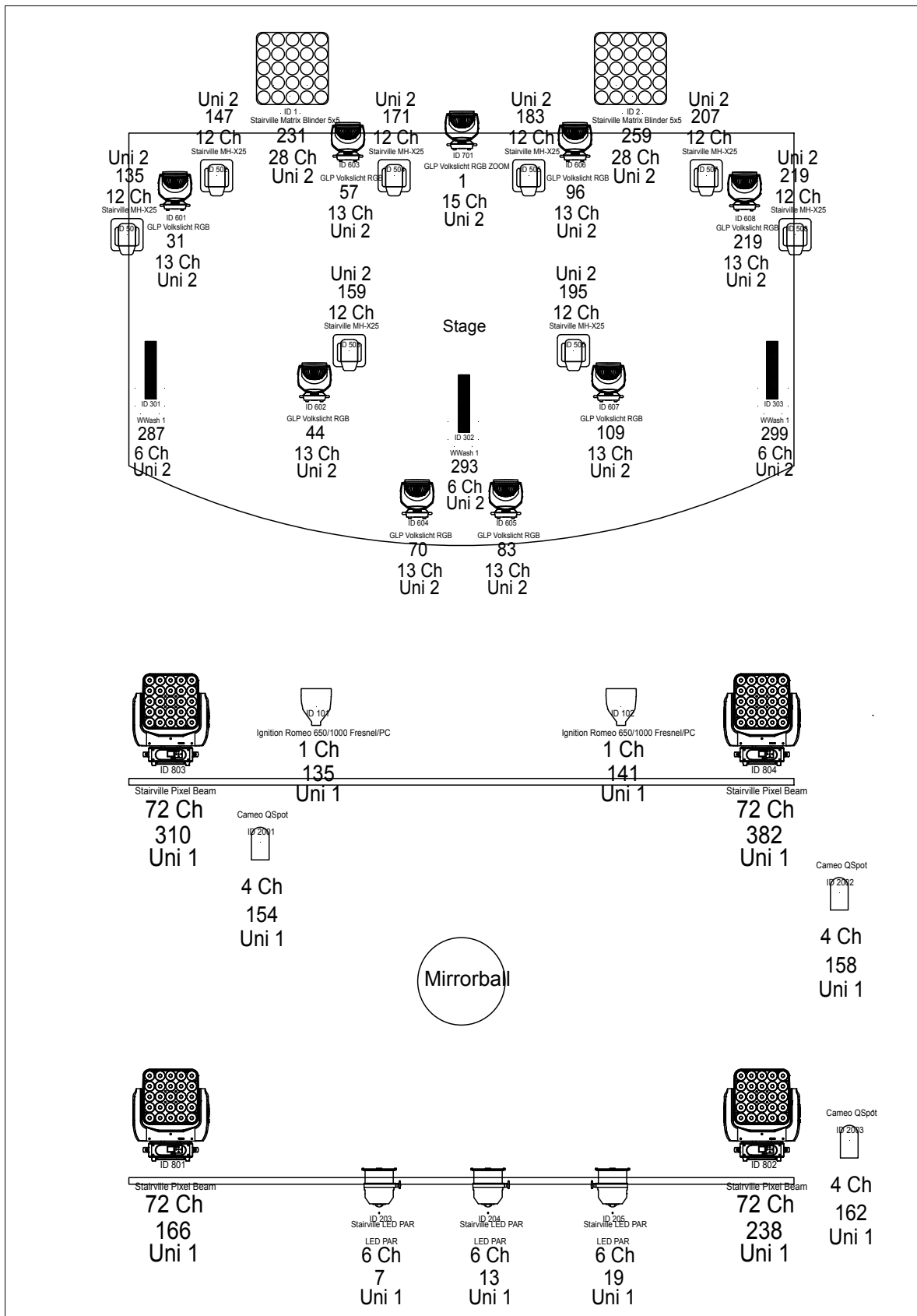
**on request / extra cost: 50 € per production*

EXTERNAL HAZE / FOG MACHINES

The operation of any other fog / haze machine than the venue's own TourHazer II has to be advanced and agreed upon before the day of the show! The production will be instructed to keep any critical doors (e.g to staircases leading to other parts of the building) shut at all times until the fog/haze has been cleared by the ventilation system.

The production will be held responsible for any violations of these restrictions leading to a fire run after the instruction.

FIXTURE PLAN



DMX-PATCH STAGE

ITEM	ID	FIXTURE	CHANNELS	ADD.	UNI.
Wash Zoom	701	GLP Volkslicht Zoom	15 CH DMX	1	2
Wash	601	GLP Volkslicht	13 CH DMX	31	2
Wash	602	GLP Volkslicht	13 CH DMX	44	2
Wash	603	GLP Volkslicht	13 CH DMX	57	2
Wash	604	GLP Volkslicht	13 CH DMX	70	2
Wash	605	GLP Volkslicht	13 CH DMX	83	2
Wash	606	GLP Volkslicht	13 CH DMX	96	2
Wash	607	GLP Volkslicht	13 CH DMX	109	2
Wash	608	GLP Volkslicht	13 CH DMX	122	2
Spot	501	Stairville MH-X25	12 CH DMX	135	2
Spot	502	Stairville MH-X25	12 CH DMX	147	2
Spot	503	Stairville MH-X25	12 CH DMX	159	2
Spot	504	Stairville MH-X25	12 CH DMX	171	2
Spot	505	Stairville MH-X25	12 CH DMX	183	2
Spot	506	Stairville MH-X25	12 CH DMX	195	2
Spot	507	Stairville MH-X25	12 CH DMX	207	2
Spot	508	Stairville MH-X25	12 CH DMX	219	2
Matrix	1	Matrix Blinder 5x5	28 CH DMX	231	2
Matrix	2	Matrix Blinder 5x5	28 CH DMX	259	2
Wild Wash	301	Stairville WildWash 132 RGB	6 CH DMX	287	2
Wild Wash	302	Stairville WildWash 132 RGB	6 CH DMX	293	2
Wild Wash	303	Stairville WildWash 132 RGB	6 CH DMX	299	2
Haze	1001	Smoke Factory TourHazer II	2 CH DMX	511	1

DMX-PATCH FLOOR

ITEM	ID	FIXTURE	CHANNELS	ADD.	UNI.
PAR	203	LED Par	6 CH DMX	7	1
PAR	204	LED Par	6 CH DMX	13	1
PAR	205	LED Par	6 CH DMX	19	1
WT9	101	Ignition Romeo 650/1000 Fresnel/PC	1 CH DMX	135	1
WT9	102	Ignition Romeo 650/1000 Fresnel/PC	1 CH DMX	141	1
QSpot	2001	Cameo QSpot	4 CH DMX	154	1
QSpot	2002	Cameo QSpot	4 CH DMX	158	1
QSpot	2003	Cameo QSpot	4 CH DMX	162	1
PixBeam	801	Stairville Pixel Beam 160 RGBW	72 CH DMX	166	1
PixBeam	802	Stairville Pixel Beam 160 RGBW	72 CH DMX	238	1
PixBeam	803	Stairville Pixel Beam 160 RGBW	72 CH DMX	310	1
PixBeam	804	Stairville Pixel Beam 160 RGBW	72 CH DMX	382	1
Haze	1001	Smoke Factory TourHazer II	2 CH DMX	511	1

CAPACITY

250 Pax

STAGE SIZE

width: 5,72 m

depth: 3,80 m

height: 0,55 m

clear height: 3,10 m

BACKDROPS

Backdrops can only be rigged on a separate 1-point truss (width approx. 4,1m, diameter 30 mm) in the back of the stage. All necessary rigging material has to be provided by the production. Additionally the backdrop must be provided with a fire safety certificate.

BACKSTAGE

Lockable with separate restroom and entrance.

PARKING

Parking is available for radio & TV-transmission cars, nightliner and production vehicles.

POWER & BROADCAST CONNECTIONS

1x 32 amps CEE power supply to the parking lot. Please bring your own cables (5m to nightliner parking).

1x 16 amps CEE power supply at FoH. Please bring your own cables (15m to stage).

2x MADI connections for broadcast & recordings. The connections run directly from the parking lot for production vehicles to FoH. The cable run is 10 meters max.

TIMES

Monday to Friday

regular „get In“ 4:00 p.m.

Soundcheck 4:30 p.m. (not possible earlier)

Saturday and Sunday possible earlier for a fee.