

MAINS	2 x KMT DF 1022 top / 2x10"/1x2"
	2 x KMT SW1520 sub / 2x15"
	2 x KMT CA-16 amplifier driving subs
	1 x Crown XLi 2500 amplifier driving tops
	1 x Xilica XP-4080 drive rack for mains
REAR SPEAKERS	2 x KMT CS 215 coaxial speaker system for party
	1 x Crown XTI 2002 DSP-amplifier
MIXER	1 x DIGICO SD-9 digital audio mixer (incl. Stealth Core 2 Upgrade) iPad incl. software for mobile mixing available.
	1 x DIGICO D-Rack / 32ch. Input / 8ch. output
	1 x Extra CAT5e cable (on request / extra cost: 30 € per production)
MONITORING	2 x Electro-Voice ELX 115 15"/1,5" fullrange
	5 x KMT CM 12 monitorwedge 12"/1" coaxial
	1 x RCF ART 312 A MKII (active) used as drumfill
	3 x Crown XTI 2002 DSP-amplifier
We can operate 7 monitor paths including monitor wedges. 8 monitor paths available on console side.	
MICROPHONES & STUFF	1 x AKG D112
	1 x Audix D6
	1 x Audix OM7
	1 x Beyer Dynamic CK703 (SDC)
	2 x MB Haun MBC 660 (SDC)
	2 x Oktava MK-012 (SDC)
	2 x Sennheiser e904
	2 x Sennheiser e604
	2 x Sennheiser e606
	1 x Shure Beta 91A
	3 x Shure SM57
	6 x Shure SM58
	2 x Shure Beta 58 A

	10 x Large booms
	2 x Medium booms
	3 x Small booms
	2 x Straight, round base
DI BOXES	6 x Palmer PAN-01 (passive)
	4 x Palmer PAN-02 (active)
	2 x Palmer PAN-04 (Stereo)
DJ - STUFF	1 x Pioneer DJM 900-Nexus Mixer, incl. USB *
	2 x Technics 1210 MK2 Vinyl Player **
	2 x Pioneer XDJ 700 Media Player, incl. USB *** (network-compatible!)
	2 x Pioneer CDJ 350 CD Player, incl. USB **** (not network-compatible!)

* on request / extra cost: 10 € per production

** on request / extra cost: 10 € per piece & production

*** on request / extra cost: 30 € per piece & production

**** on request / no extra costs

I/O-PATCH FOR SD-9-SHOWFILES

Feel free to bring your own session file. Stereo out is connected via local outs 7&8 on the desk. Talkback is connected to local In 1, stereo-mini-jack to local ins 7&8. Monitor sends should be routed to Rack 1, Line Out 1-8, outputs 1 to 6.

The desk runs with Stealth Core 2 Upgrade.

MONITOR DESKS

Monitor desks are only to be set up either in the upstage right corner or in the stage left access area. The emergency exits and their surrounding areas have to be kept clear at all times.

For further details please check the green marked areas on the floor plan on page 7.

RECORDING

We offer a high quality multitrack recording service of your show at an affordable rate. If you are interested in having your show multitracked, please get in touch with Juanfe via +49(0)15221986293 to discuss the details.

LIGHTS

1 x MA Lighting 2Port Node 1k

1 x Control Package: HP Prodesk 400 G3, Elation Midicon Pro, Dell S2240T **Running gMA OnPC 3.9.60.28**

1 x BOTEK DD-4 DMX Booster/Splitter 4-way, pinout: 3&5

12 x Stairville MH-110 LED Wash LED Moving Head

4 x Stairville Pixel Beam 160 RGBW

8 x Stairville MH-X30 30W LED Spot Moving Head

2 x Stairville Matrix Blinder 5x5

2 x Ignition Romeo 650/1000 Fresnel/PC (1x Botex UP-2 - 1 Channel Dimmer 10 A)

3 x Cameo QSpot

3 x Stairville WildWash 132 RGB

1 x Smoke Factory TourHazer II

1 x Mirror Ball 50cm with Motor

PROJECTION *

1 x Projector NEC M300W / 3000 ANSI-Lumen/ WXGA Resolution 16:10

1 x screen / approx. 5m x 3m

Video feed via HDMI from stage or HDMI from front of house.
 Data playback also possible via USB stick.
 Projection is only possible as front projection.

***on request / extra cost: 50 € per production**

EXTERNAL HAZE / FOG MACHINES

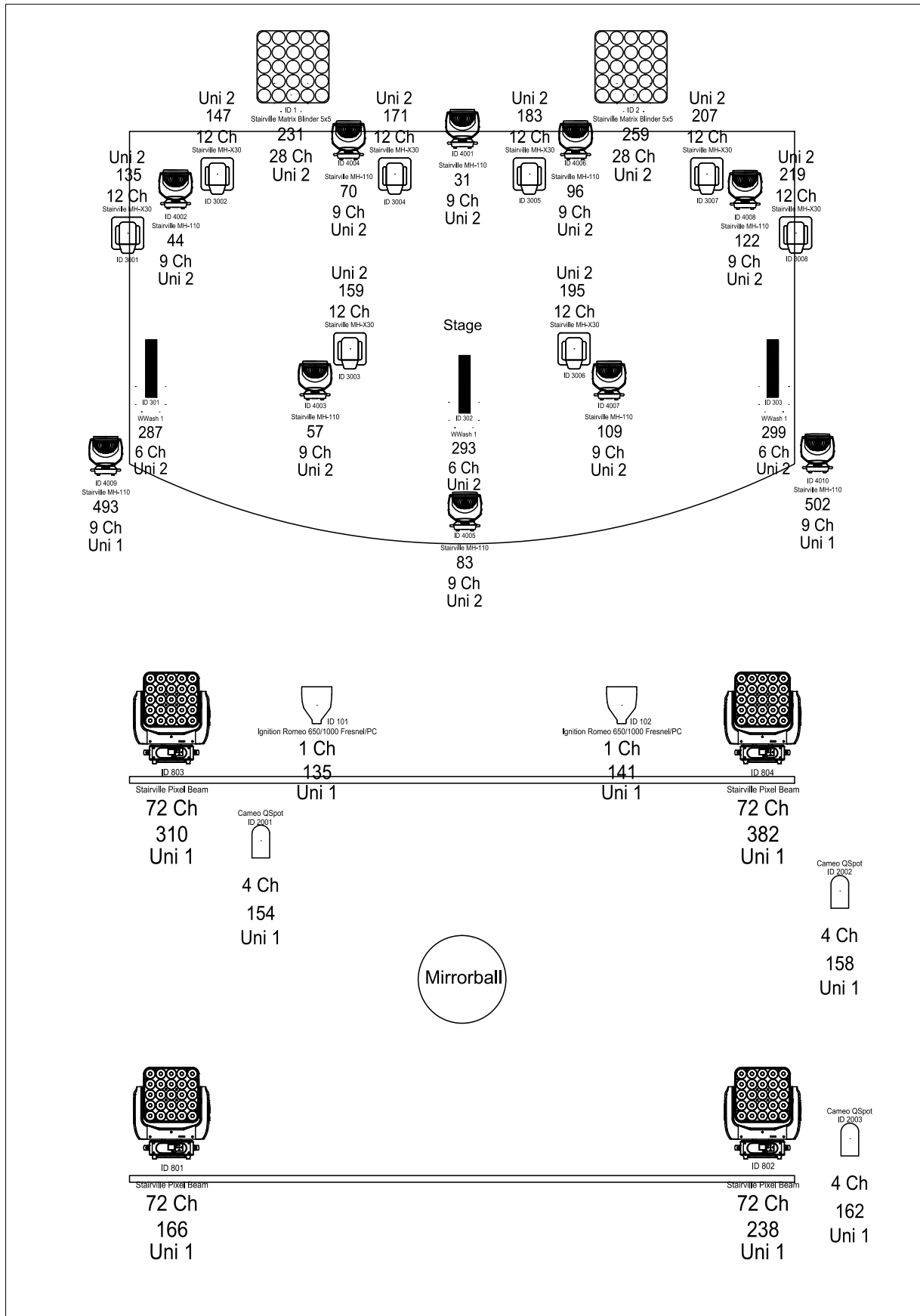
The operation of any other fog / haze machine than the venue's own TourHazer II has to be advanced and agreed upon before the day of the show! The production will be instructed to keep any critical doors (e.g to staircases leading to other parts of the building) shut at all times until the fog/haze has been cleared by the ventilation system.

The production will be held responsible for any violations of these restrictions leading to a fire run after the instruction.

FIXTURE PLAN | LIGHT PLOT

DMX-PATCH STAGE

ITEM	ID	FIXTURE	CHANNELS	ADD.	UNI.
Wash	4001	Stairville MH-110	9 CH DMX	31	2
Wash	4002	Stairville MH-110	9 CH DMX	44	2
Wash	4003	Stairville MH-110	9 CH DMX	57	2
Wash	4004	Stairville MH-110	9 CH DMX	70	2
Wash	4005	Stairville MH-110	9 CH DMX	83	2
Wash	4006	Stairville MH-110	9 CH DMX	96	2
Wash	4007	Stairville MH-110	9 CH DMX	109	2
Wash	4008	Stairville MH-110	9 CH DMX	122	2
Wash	4009	Stairville MH-110 (Floor Light)	9 CH DMX	493	1
Wash	4010	Stairville MH-110 (Floor Light)	9 CH DMX	502	1
Spot	3001	Stairville MH-X30	12 CH DMX	135	2
Spot	3002	Stairville MH-X30	12 CH DMX	147	2
Spot	3003	Stairville MH-X30	12 CH DMX	159	2
Spot	3004	Stairville MH-X30	12 CH DMX	171	2
Spot	3005	Stairville MH-X30	12 CH DMX	183	2
Spot	3006	Stairville MH-X30	12 CH DMX	195	2
Spot	3007	Stairville MH-X30	12 CH DMX	207	2
Spot	3008	Stairville MH-X30	12 CH DMX	219	2
Matrix	1	Matrix Blinder 5x5	28 CH DMX	231	2
Matrix	2	Matrix Blinder 5x5	28 CH DMX	259	2
Wild Wash	301	Stairville WildWash 132 RGB	6 CH DMX	287	2
Wild Wash	302	Stairville WildWash 132 RGB	6 CH DMX	293	2
Wild Wash	303	Stairville WildWash 132 RGB	6 CH DMX	299	2
Haze	1001	Smoke Factory TourHazer II	2 CH DMX	511	1



DMX-PATCH FLOOR

ITEM	ID	FIXTURE	CHANNELS	ADD.	UNI.
2x Lens Spotlight	101	Ignition Romeo 650/1000 Fresnel/PC	1 CH DMX	135	1
QSpot	2001	Cameo QSpot	4 CH DMX	154	1
QSpot	2002	Cameo QSpot	4 CH DMX	158	1
QSpot	2003	Cameo QSpot	4 CH DMX	162	1
PixBeam	801	Stairville Pixel Beam 160 RGBW	72 CH DMX	166	1
PixBeam	802	Stairville Pixel Beam 160 RGBW	72 CH DMX	238	1
PixBeam	803	Stairville Pixel Beam 160 RGBW	72 CH DMX	310	1
PixBeam	804	Stairville Pixel Beam 160 RGBW	72 CH DMX	382	1
Haze	1001	Smoke Factory TourHazer II	2 CH DMX	511	1

We can provide 2 DMX universes (A+B) at the FOH for external lighting consoles.



STAGE SIZE

width: 5,72 m
depth: 3,80 m
height: 0,55 m
clear height: 3,10 m

BACKDROPS

Backdrops can only be rigged on a separate 1-point truss (width approx. 4,1m, height 2,9m, diameter 30 mm) in the back of the stage. All necessary rigging material has to be provided by the production. Additionally the backdrop must be provided with a fire safety certificate.

BACKSTAGE

Lockable with separate restroom and entrance.

PARKING

Parking is available in the backyard for production vehicles & radio & TV-transmission cars.

Parking space (max. 14 metres) for 2 x vans with a maximum length of 7 metres, or 3 normal cars.

Attention!!! Vehicles longer than 7 metres are not permitted to drive or park in the yard, as there are no turning facilities for these vehicles.

It is not possible to park Nightliner buses or trucks longer than 7 metres in the courtyard.

Organizers can have a parking zone for a nightliner or truck cordoned off in the Parkhafen directly in front of the venue at Skalitzer Str. 85-86 for a fee via the responsible authorities.

Power supply to vehicles parked there is not possible.

POWER & BROADCAST CONNECTIONS

1x 32 amps CEE power supply to the parking lot. Please bring your own cables.

1x 16 amps CEE power supply at FoH. Please bring your own cables (15m to stage).

2x MADI connections for broadcast & recordings. The connections run directly from the parking lot for production vehicles to FoH. The cable run is 10 meters max.

CAPACITY

250 Pax

TIMES

Monday to Friday

regular „get In“ 4:00 p.m.

get in / load in + set up possible earlier for a fee.

Soundcheck 4:30 p.m. (not possible earlier)

Saturday and Sunday soundcheck possible earlier for a fee.