

MAINS	2 x KMT DF 1020 top / 2x10"/1x2"
	2 x KMT SW1520 sub / 2x15"
	2 x KMT CA-16 amplifier driving subs
	1 x Crown XLi 2500 amplifier driving tops
	1 x Xilica XP-4080 drive rack for mains
REAR SPEAKERS	2 x KMT CS 215 coaxial speaker system for party
	1 x QSC GX5 amplifier for party
MIXER	1 x DIGICO SD-9 digital audio mixer
	1 x DIGICO D-Rack / 32ch. Input / 8ch. output
MONITORING	5 x KMT CM 12 monitorwedge 12"/1" coaxial
	1 x RCF ART 312 A MKII used as drumfill
	3 x Crown XTI 2002 DSP-amplifiers
MICROPHONES & STUFF	1 x AKG D112
	1 x Audix D6
	1 x Audix OM7
	1 x Beyerdynamic CK703 (SDC)
	2 x MB Haun MBC 660 (SDC)
	2 x Oktava MK-012 (SDC)
	1 x Sennheiser e904
	2 x Sennheiser e604
	2 x Sennheiser e606
	3 x Shure SM57
	5 x Shure SM58
	10 x Large booms
	2 x Medium booms
	3 x Small booms
	1 x Straight, round base

DI BOXES

6 x Palmer PAN-01 (passive)

4 x Palmer PAN-02 (active)

DJ - STUFF

3 x Technics 1210 MK2 Vinyl Player

2 x Pioneer CDJ 350 CD Player, incl. USB

1 x Pioneer DJM 900-Nexus Mixer, incl. USB

I/O-PATCH FOR SD-9-SHOWFILES

Feel free to bring your own session file. Stereo out is connected via local outs 7&8 on the desk. Talkback is connected to local in 1, stereo-mini-jack to local ins 7&8. Monitor sends should be routed to Rack 1, Line Out 1-8, outputs 1 to 6.

The desk runs the recent firmware.

RECORDING

We offer a high quality multitrack recording service of your show at an affordable rate. If you are interested in having your show multitracked, please get in touch with Ben via +49(0)173 9907190 to discuss the details.

LIGHTS

1 x High End Systems WHOLEHOG II

1 x BOTEX DD-4 DMX Booster/Splitter 4-way, pinout: 3&5

8 x GLP Volkslicht RBG

2 x GLP Volkslicht RGB ZOOM

6 x SHOWTECH LED Microspot moving light

8 x Stairville MH-X25 25W LED moving light

2 x LITECRAFT Studio PAR WT9

10 x LED Par 56, RGB

1 x Smoke Factory TourHazer II

1 x Mirror Ball 50cm with Motor and Spots

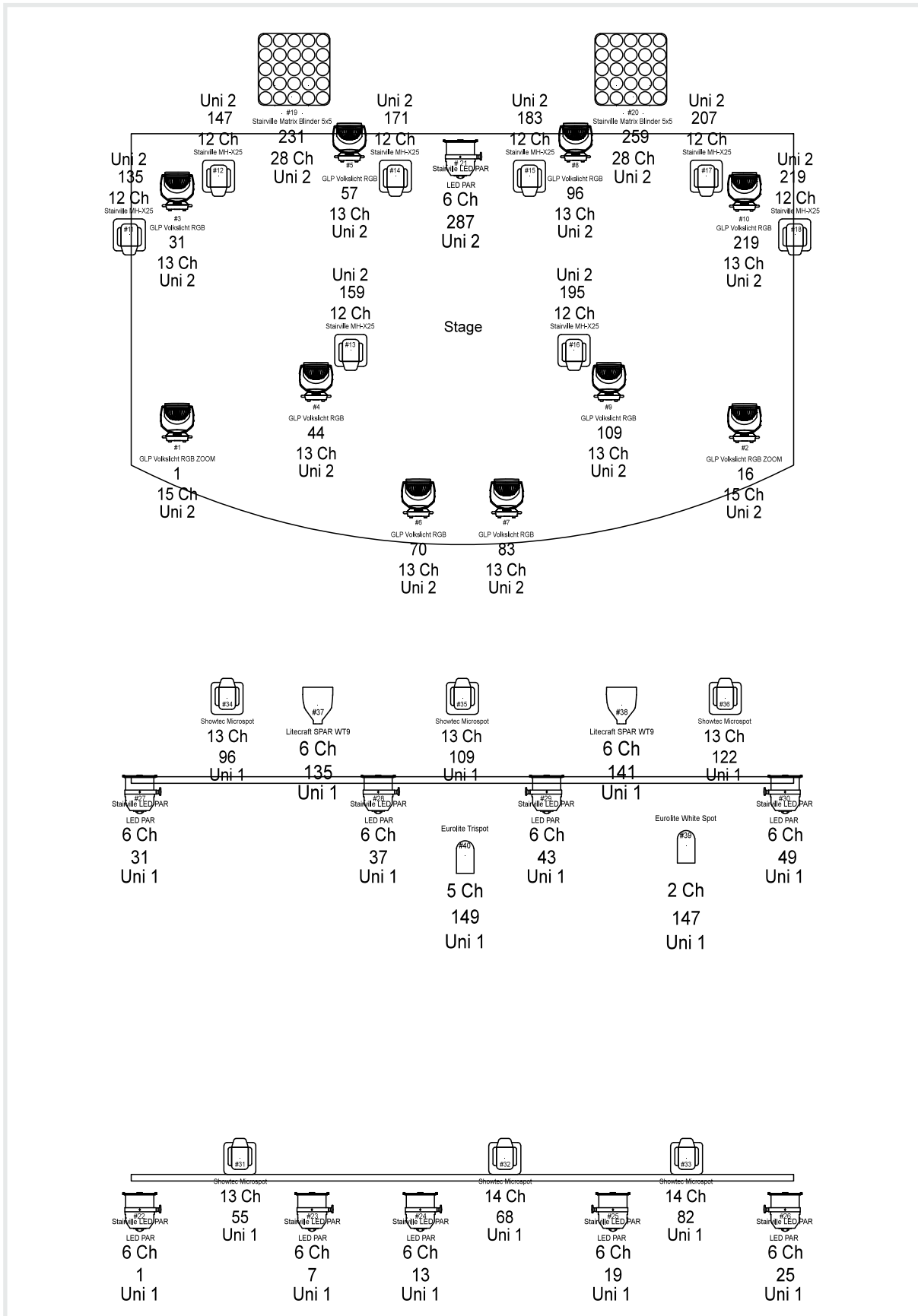
PROJECTION *

1 x Projector NEC M300W / 3000 ANSI-Lumen/ WXGA Resolution 16:10

1 x screen / approx. 5m x 3m

*on request / extra cost: 50 € per production

FIXTURE PLAN



DMX-PATCH STAGE

ITEM	U#	FIXTURE	CHANNELS	ADD.	UNI.
ZOOM 1	1	GLP Volkslicht Zoom	15 CH DMX	1	2
ZOOM 2	2	GLP Volkslicht Zoom	15 CH DMX	16	2
GLP01	3	GLP Volkslicht	13 CH DMX	31	2
GLP02	4	GLP Volkslicht	13 CH DMX	44	2
GLP03	5	GLP Volkslicht	13 CH DMX	57	2
GLP04	6	GLP Volkslicht	13 CH DMX	70	2
GLP05	7	GLP Volkslicht	13 CH DMX	83	2
GLP06	8	GLP Volkslicht	13 CH DMX	96	2
GLP07	9	GLP Volkslicht	13 CH DMX	109	2
GLP08	10	GLP Volkslicht	13 CH DMX	122	2
MH-X25-1	11	Stairville MH-X25	12 CH DMX	135	2
MH-X25-2	12	Stairville MH-X25	12 CH DMX	147	2
MH-X25-3	13	Stairville MH-X25	12 CH DMX	159	2
MH-X25-4	14	Stairville MH-X25	12 CH DMX	171	2
MH-X25-5	15	Stairville MH-X25	12 CH DMX	183	2
MH-X25-6	16	Stairville MH-X25	12 CH DMX	195	2
MH-X25-7	17	Stairville MH-X25	12 CH DMX	207	2
MH-X25-8	18	Stairville MH-X25	12 CH DMX	219	2
BLIND 1	19	Matrix Blinder 5x5	28 CH DMX	231	2
BLIND 2	20	Matrix Blinder 5x5	28 CH DMX	259	2
PAR	21	LED Par	6 CH DMX	287	2
HAZ 1	42	Smoke Factory TourHazer II ! Same as U# 41	2 CH DMX	511	3

DMX-PATCH FLOOR

ITEM	U#	FIXTURE	CHANNELS	ADD.	UNI.
PAR	22	LED Par	6 CH DMX	1	1
PAR	23	LED Par	6 CH DMX	7	1
PAR	24	LED Par	6 CH DMX	13	1
PAR	25	LED Par	6 CH DMX	19	1
PAR	26	LED Par	6 CH DMX	25	1
PAR	27	LED Par	6 CH DMX	31	1
PAR	28	LED Par	6 CH DMX	37	1
PAR	29	LED Par	6 CH DMX	43	1
PAR	30	LED Par	6 CH DMX	49	1
SPOT01	31	Showtec Microspot	13 CH DMX	55	1
SPOT02	32	Showtec Microspot	14 CH DMX	68	1
SPOT03	33	Showtec Microspot	14 CH DMX	82	1
SPOT05	34	Showtec Microspot	13 CH DMX	96	1
SPOT06	35	Showtec Microspot	13 CH DMX	109	1
SPOT07	36	Showtec Microspot	13 CH DMX	122	1
WT9	37	LITECRAFT SPAR	6 CH DMX	135	1
WT9	38	LITECRAFT SPAR	6 CH DMX	141	1
WSPOT	39	White Spot Mirrorball	2 CH DMX	147	1
CSPOT	40	Colorspot Mirrorball	5 CH DMX	149	1
HAZ 1	41	Smoke Factory TourHazer II	2 CH DMX	511	1



STAGE SIZE

width: 5,72 m
 depth: 3,80 m
 height: 0,55 m
 clear height: 3,10 m

BACKSTAGE

Lockable with separate restroom and entrance.

PARKING

Parking is available for radio & TV-transmission cars, nightliner and production vehicles.

POWER & BROADCAST CONNECTIONS

1x 32 amps CEE power supply to the parking lot. Please bring your own cables (5m to nightliner parking).

1x 16 amps CEE power supply at FoH. Please bring your own cables (15m to stage).

2x MADI connections for broadcast & recordings. The connections run directly from the parking lot for production vehicles to FoH. The cable run is 10 meters max.